



16573305

Edition 6

November 2021

Air Grinder

88V Series

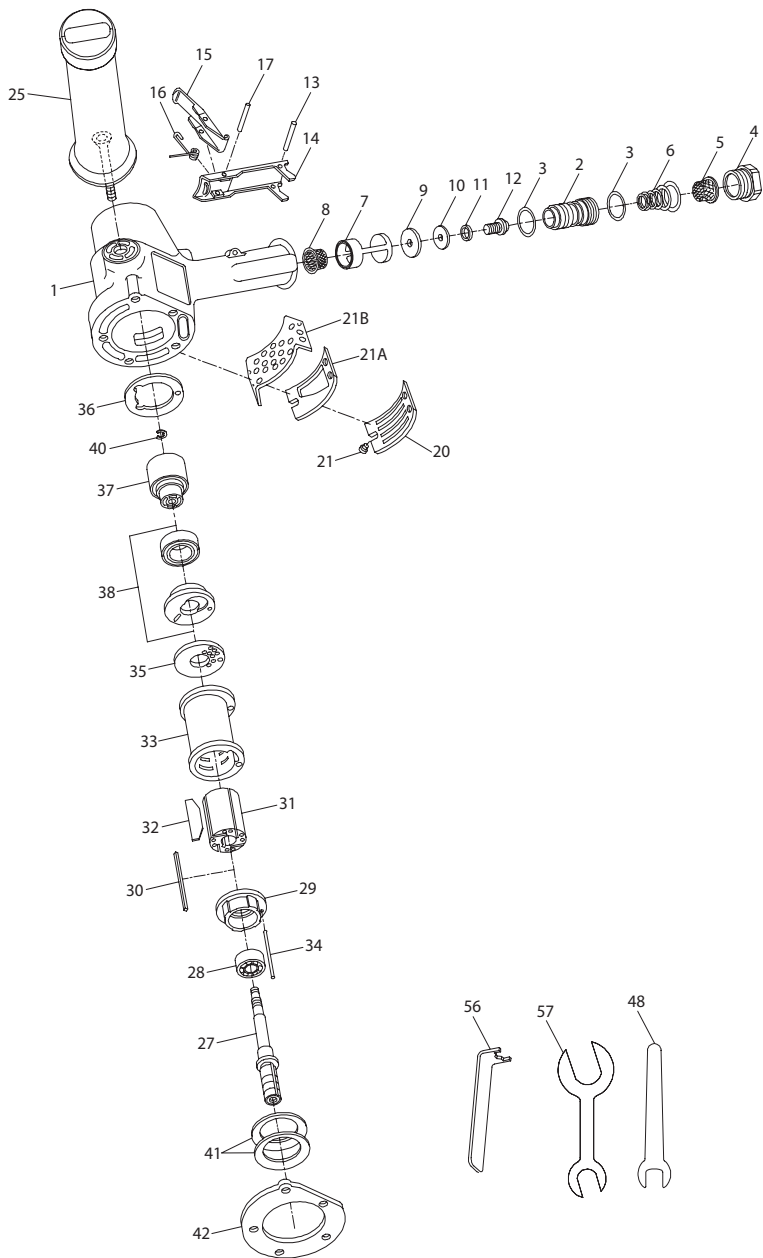
Parts Information



Save These Instructions



88V Series, Air Grinder - Exploded View



(Dwg. TPA731-4)

88V Series, Air Grinder - Parts List

Item	Part Description	Part Number	Item	Part Description	Part Number
‡1	Cylinder Case Assembly		21	Exhaust Deflector Screw (3 required)	99V60-200
	for models ending in -EU	88V60-EU-A25	21A	Exhaust Deflector (for 88V60-EU, 88V77 and 88V85)	88V77-123
	for all other models	88V60-A25		Exhaust Baffle (for 88V60-EU, 88V77 and 88V85)	88V77-311
2	Throttle Valve Assembly	88V60-A302	25	Dead Handle	88V60-48
†•3	Seal (2 required)	C321-606	27	Arbor	
4	Inlet Bushing	88V60-38		for 88V60 (Blue)	88V60-204-P10
†•5	Inlet Bushing Screen	834-61		for 88V77 (Green)	88V77-204-P10
†•6	Throttle Valve Spring	99V60-262		for 88V85 (Red)	88V85-204-P10
7	Throttle Valve Seat Support Assembly	88V60-A303	28	Front Rotor Bearing	R380-105
†•8	Air Strainer Screen	834-61	29	Front End Plate	88V60-11
†•9	Valve Seat	R4-159A	•30	Rotor Key	88V60-70
10	Valve Seat Washer	99V60-155	31	Rotor	88V60-53
11	Valve Screw Lock Washer	H54U-352	†•32	Vane Packet (set of 4 Vanes)	88V60-42-4
12	Valve Seat Screw	P53-83	33	Cylinder	88V60-3
•13	Throttle Lever Pin	MR-100	•34	Cylinder Dowel	88V60-98
14	Locking Lever Assembly	88V60-A400	35	Rear End Plate	88V60-12
15	Lever Lock	88V60-402	†•36	Rear End Plate Gasket	88V60-739
16	Lever Lock Spring	88V60-405	37	Controller Assembly	
17	Lever Lock Pin	502B-120		for 88V60 (6000 rpm) (Blue)	88V60-A524
*	Nameplate Kit (for 88V60-EU-A25)	88V-EU-K301		for 88V77 (7700 rpm) (Green)	88V77-A524
*	Nameplate Screw (for 88V60-EU-A25 (4 required)	BN403-302		for 88V85 (8500 rpm) (Red)	88V85-A524
*	Warning Label (for 88V60-EU-A25)	EU-99	38	Rotor Bearing Seal Assembly	88V60-A28
*	Nameplate Kit (for 88V60-A25)	88V-K301	†40	Controller Retaining Ring	88V60-118
	Nameplate Screw (4 required)	BN403-302	41	Motor Clamp Belleville Washer (2 required)	88V60-207
	Warning Label	WARNING-2-99	†•42	Cylinder Case Gasket	88V60-283
20	Exhaust Deflector	99V60-23			

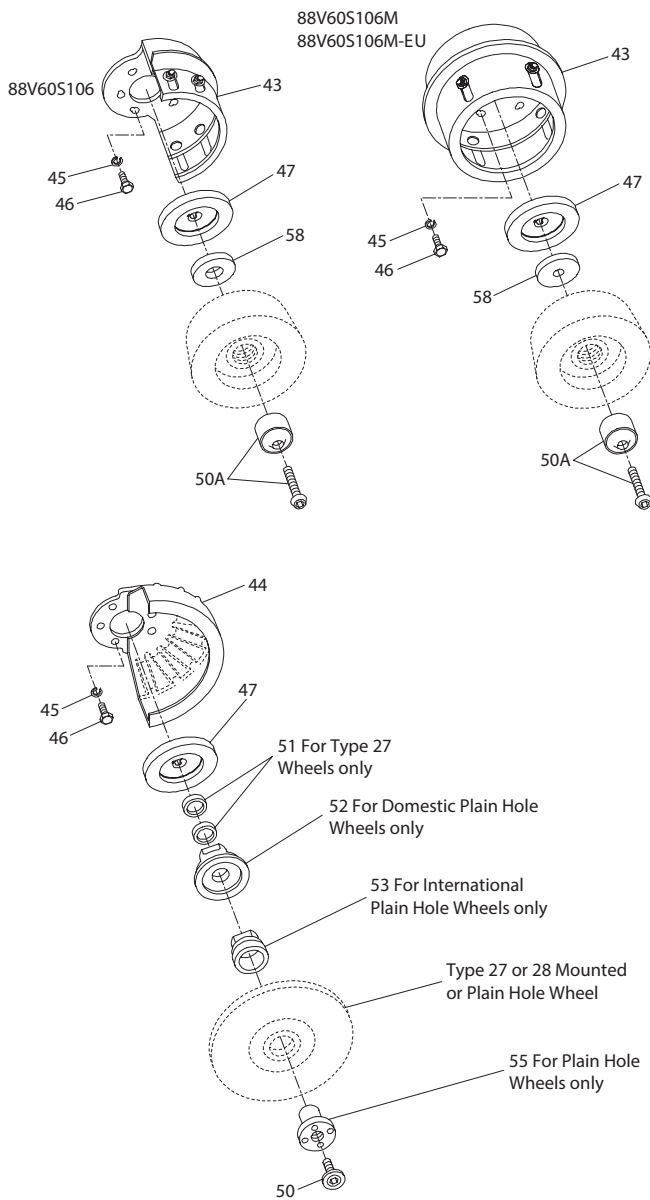
* Indicates not illustrated.

• Indicates common-wear parts. Maintain stock to reduce downtime.

‡ Whenever a new Cylinder Case Assembly is installed, select the correct Nameplate from the Nameplate Kit and attach it to the Cylinder Case with the Nameplate Screws.

† Indicates Tune-up Kit part.

88V Series, Air Grinder Guards, Flanges and Spacers - Exploded View



88V Series, Air Grinder Guards, Flanges and Spacers - Parts List

Item	Part Description	Part Number	Item	Part Description	Part Number
43	Cup Wheel Guard		55	Depressed Center Wheel Nut (for Plain Hole Wheels)	99V85-186
	for 88V60S106	88V60-A216			
	for 88V60S106M	88V60-A216M	56	Depressed Center Wheel Nut Spanner Wrench	D32-26
44	Depressed Center Wheel Guard (for Type 27 or 28 Wheels)		57	Disc Wheel Flange Wrench (for 88V60P107M, 88V60P109M, 88V77107M and 88V85P107M)	7RAQT4-254
	for 88V60P109 and 88V60P109M	88V60-106-9	58	Wheel Flange (for 88V60S106, 88V60S106M and 88V60S106M-EU)	88V60-86A
	for 88V60P107, 88V60P107M, 88V77P107, 88V77P107M and 88V85P107M	88V60-106-7		*	Piped-Away Exhaust Kit
			*	Exhaust Hose	99V60-184
			*	Exhaust Hose Clamp	DG30-67
45	Cylinder Case Screw Lock Washer (5 required)	10BM-67	*	Exhaust Elbow	88V60-167
46	Cylinder Case Screw (5 required)	99V60-638	*	Exhaust Elbow Gasket	99V60-49
47	Autobalancer Assembly	99V60-A713	*	Exhaust Elbow Screw (3 required)	FEA100-112
48	Autobalancer Wrench	88V60-169	*	Exhaust Hose Band Assembly	99V60-A927
50	Wheel Retaining Screw (for Type 27 and Type 28 Mounted Wheels and Type 28 Plain Hole Wheels)	99V60-219	*	Cap Screw (2 required)	JC3350-103
			*	Nut (6 required)	G8-120A
	50A	Wheel Retaining Screw Assembly (for Type 6 or Type 11 Cup Wheels)	99V60-A219C	*	Exhaust Hose Band (4 required)
*	Wheel Retaining Screw Wrench	88V-562	*	Screw (4 required)	MT1-36-7/8
51	Depressed Center Wheel Spacer (for Type 27 Plain Hole Wheels) (2 required)	99V-286	*	Tool Kit	88V60-K950
			*	Controller Wrench	88V60-950
			*	Seal Pressing Tool	99V60-951
52	Depressed Center Wheel Flange (for 7" and 9" diameter Type 27 and Type 28 Plain Hole Wheels)	99V60-386	*	Bearing Clamp Assembly	99V60-A952
			*	Deflector Screw Wrench	R2J-562
			*	Tune-up Kit (includes illustrated parts: 3 [2], 5, 6, 9, 32, 36, 40 and 42)	88V/88H-TK3
53	Depressed Center Wheel Flange Assembly (for 180 mm and 230 mm diameter Type 27 Plain Hole Depressed Center Wheels)	99V60-386-M			

* Indicates not illustrated.

Parts and Maintenance

When tool life has expired, it is recommended that the tool be disassembled, degreased and parts separated by material for proper recycling.

Tool repair and maintenance should only be carried out by an authorized Service Center.

Refer all communications to the nearest **Ingersoll Rand** office or distributor.

Related Documentation

Manuals can be downloaded from ingersollrand.com

For additional information, refer to:

Product Safety Information Manual 04584959

Product Maintenance Information Manual 16573362

Product Information Manuals 16573222 and 16576092

Notes:

Notes:
